

# OWEN AARONOVITCH

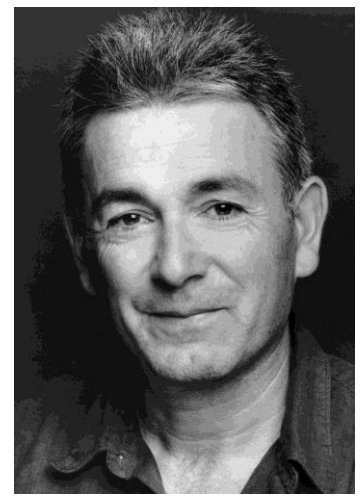
83a Queens Park Road

Brighton BN2 0GJ

01273 603830

07803 773203

[madmaddogs@sky.com](mailto:madmaddogs@sky.com) [www.maddogs.org.uk](http://www.maddogs.org.uk)



Owen has been a professional actor for 26 years. He has worked extensively over that period in theatre, television, radio, voice-over and theatre-based training. He began his career in 1982 working with the Coventry based Belgrade Theatre in Education Company, which was one of the pioneers of forum and interactive theatre in the U.K. In 1999 he co-founded Mad Dogs Theatre Company, devising and scripting interactive theatre pieces which are used in a variety of situations, including the teaching of English to overseas students and drama role-plays for students of French at secondary school.

## **Corporate, training and role-play**

### **ASTAR TRAINING**

Home Office staff and managers  
Metropolitan Police Authority  
Sussex Probation Authority  
Shell Expro managers

Equality and Diversity  
Equality and Diversity  
Equality and Diversity  
Equality and Diversity

### **CATS 3000/CHRIS STAGG ASSOCIATES**

Eurotunnel staff and managers  
(18 month rollout)

Communication and customer care  
Performance management

### **CHRIS STAGG ASSOCIATES**

Portsmouth Housing Association  
Portsmouth Housing Association  
DTI  
Civil Service  
Lohmann Adhesives  
The Pensions Regulator  
British Gypsum staff and managers

Arrears Collection training  
Job interview coaching for managers  
Staff Training  
Human Resources Training  
Influence and Selling  
Negotiation and Influence  
Performance management

### **CATS3000**

NHS Managers  
B&W Speakers

Management Styles  
Assertiveness and conflict  
resolution

### **THALES TRAINING**

APV Engineering  
Managers  
Graduate training

Project Manager training  
Conflict resolution  
Making Winning Bids

### **IAN DODDS ASSOCIATES**

Foreign and Commonwealth Office

Diversity and Inclusion  
(international roll-out to 15 countries  
in Africa, Europe and the Middle East)

### **LONDON ROLEPLAY**

Waitrose

Leadership programme

### **PBLD**

The Pensions Regulator

Case Managers' Training